

capture
a trip



J-POP JAPAN

7 NIGHTS | 8 DAYS



OUR FUNDING STORY:

A NEW CHAPTER BEGINS

*We're excited to announce that **Aakash Anand**, founder of **Bella Vita Organic** and **The Perfume Man of India**, has joined us as a strategic investor!*

Aakash shares our vision of creating meaningful travel experiences and is helping us dream bigger and grow faster. Together, we're set to redefine exploration and craft unforgettable journeys.

Here's to new adventures, fueled by passion and the sweet scent of success!





ABOUT DESTINATION

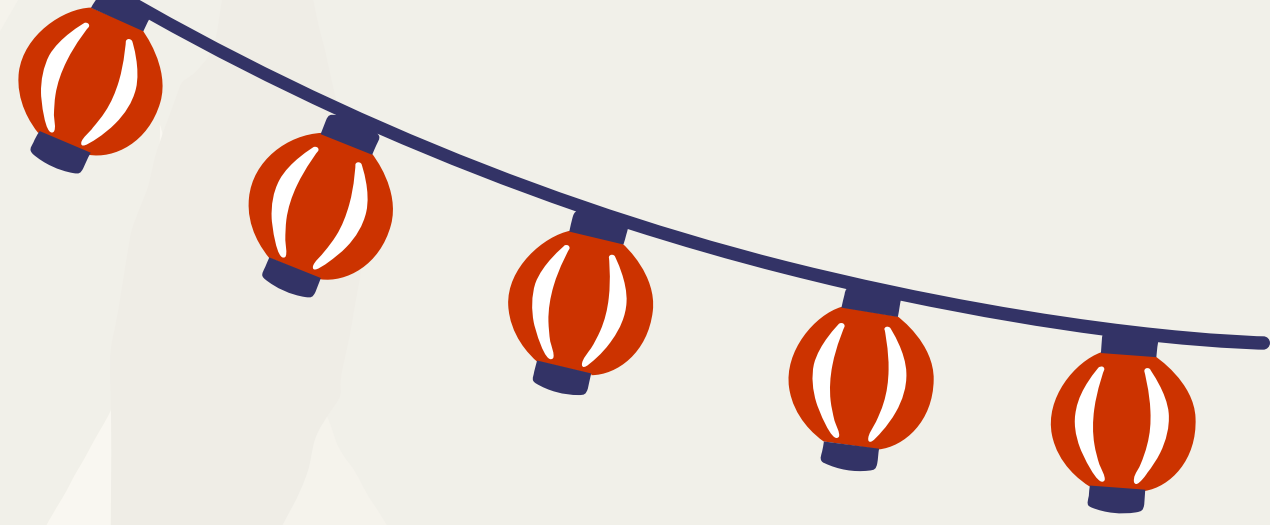
JAPAN

Japan, a land where timeless tradition meets modern innovation, offers an unforgettable blend of natural beauty and cultural richness. From the snowy landscapes of Hokkaido to the tropical shores of Okinawa, each region has its own unique charm.

In Kyoto, ancient temples, serene gardens, and seasonal beauty reflect the country's deep-rooted heritage. Meanwhile, Tokyo dazzles with its futuristic skyline, vibrant neighborhoods, and rich mix of old and new—from historic shrines to bustling tech hubs.

Further south, Osaka stands out for its lively spirit, mouthwatering street food, and colorful entertainment districts. Whether you're soaking in an onsen, witnessing cherry blossoms in full bloom, or exploring a traditional festival, Japan is a journey through wonder and contrast.

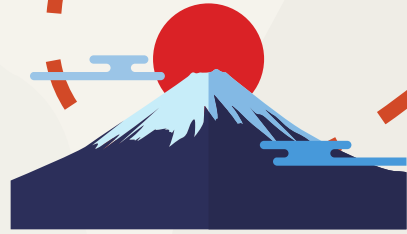




BRIEF MAP



TOKYO



MOUNT
FUJI



HIROSHIMA



MIYAJIMA
ISLAND



NARA



KYOTO



OSAKA



DAY 1

TOKYO ARRIVAL

- Arrival in Tokyo – Touch down at Tokyo Haneda Airport (HND) for the start of your exciting journey.
- We will provide Group Airport Transfers to Hotel – Available at two convenient times: 9:00 AM & 5:00 PM.
- Check-in & Relax – Unwind at your hotel after your journey and settle in.
- Leisure Time to Explore – The rest of the day is yours! Venture out and soak in the city's vibrant vibes.
- Overnight Stay – Enjoy a comfortable night in your Tokyo hotel, ready for the adventure ahead

RECOMMENDED SPOTS TO EXPLORE ON YOUR OWN:

- The iconic Shibuya Crossing – a must-see Tokyo experience
- The cultural charm of Asakusa
- The electric buzz of Akihabara – paradise for anime and tech lovers





DAY 2

TOKYO CITY EXPLORATION TOUR

- Start your day with a delicious breakfast at the hotel.
- Meet your friendly tour guide at the hotel for an exciting guided walking and metro adventure.
- Use your Metro Pass, provided by us for 3 days (valid on metro lines only) to travel between Tokyo's top attractions.

DISCOVER THE BEST OF TOKYO WITH VISITS TO:

- Shinjuku Gyoen National Garden – A peaceful escape in the heart of the city (Entrance fee: ¥500 (INR 300), payable in cash – Not included in package)
- Scenic Sakura spots & the bustling Shinjuku district – full of energy, shops, and local charm
- The legendary Tokyo Tower – Capture panoramic city views from this iconic landmark
- The ancient Sensoji Temple in Asakusa – Tokyo's oldest and most famous temple
- Dive into the mesmerizing world of art at TeamLab – an unforgettable interactive digital art experience. (TeamLab ticket depends upon availability, we will provide some other attraction if Teamlab tickets are not available)
- Enjoy a comfortable overnight stay in Tokyo.

NOTE: THIS IS A WALKING TOUR, SO GET READY TO EXPLORE ON FOOT! EXPECT TO COVER A WALKING DISTANCE OF AROUND 2-4 KM ALONG WITH METRO RIDES..



DAY 3

MAJESTIC MOUNT FUJI TOUR

- Start your day with a hearty breakfast at the hotel.
- 07:30 AM – Be ready in the hotel lobby – Punctuality is key! The driver will not wait, so please be on time.
- Embark on a breathtaking journey to Japan's most iconic natural wonder – Mount Fuji.

TOUR HIGHLIGHTS:

- Mount Fuji 5th Station – Soak in the spectacular mountain views and fresh alpine air.
- Chureito Pagoda – Capture postcard-perfect views of Mount Fuji with this iconic pagoda in the foreground.
- Oshi Park and Lake Kawaguchi
- Evening Return – Head back to your hotel in Tokyo with unforgettable memories.
- Overnight Stay in Tokyo – Rest and recharge for the adventures ahead!





DAY 4

TOKYO TO HIROSHIMA VIA SHINKANSEN

- Enjoy breakfast at your Tokyo hotel.
- Travel to Tokyo Station (By own)
- Take the metro or opt for an Uber (self-paid) to reach Tokyo Station. If you're planning to travel by Metro, try to keep your luggage compact. (Tokyo station from your hotel will be 2-4 KM)
- Board the Shinkansen to Hiroshima (4-hour ride)
- Trains depart every 10–15 minutes from 6:00 AM to 8:00 PM.
- Exchange your Bullet train/ Shinkansen voucher at the vending machine at the station.
- Arrival in Hiroshima: Check-in at your hotel.
- Evening Free Time (By Own) – Visit the serene Hiroshima Peace Park or enjoy a local stroll.
- Overnight in Hiroshima

NOTE: OUR HOTEL WILL BE AROUND 1 KM FROM ANY METRO OR HIROSHIMA STATION.





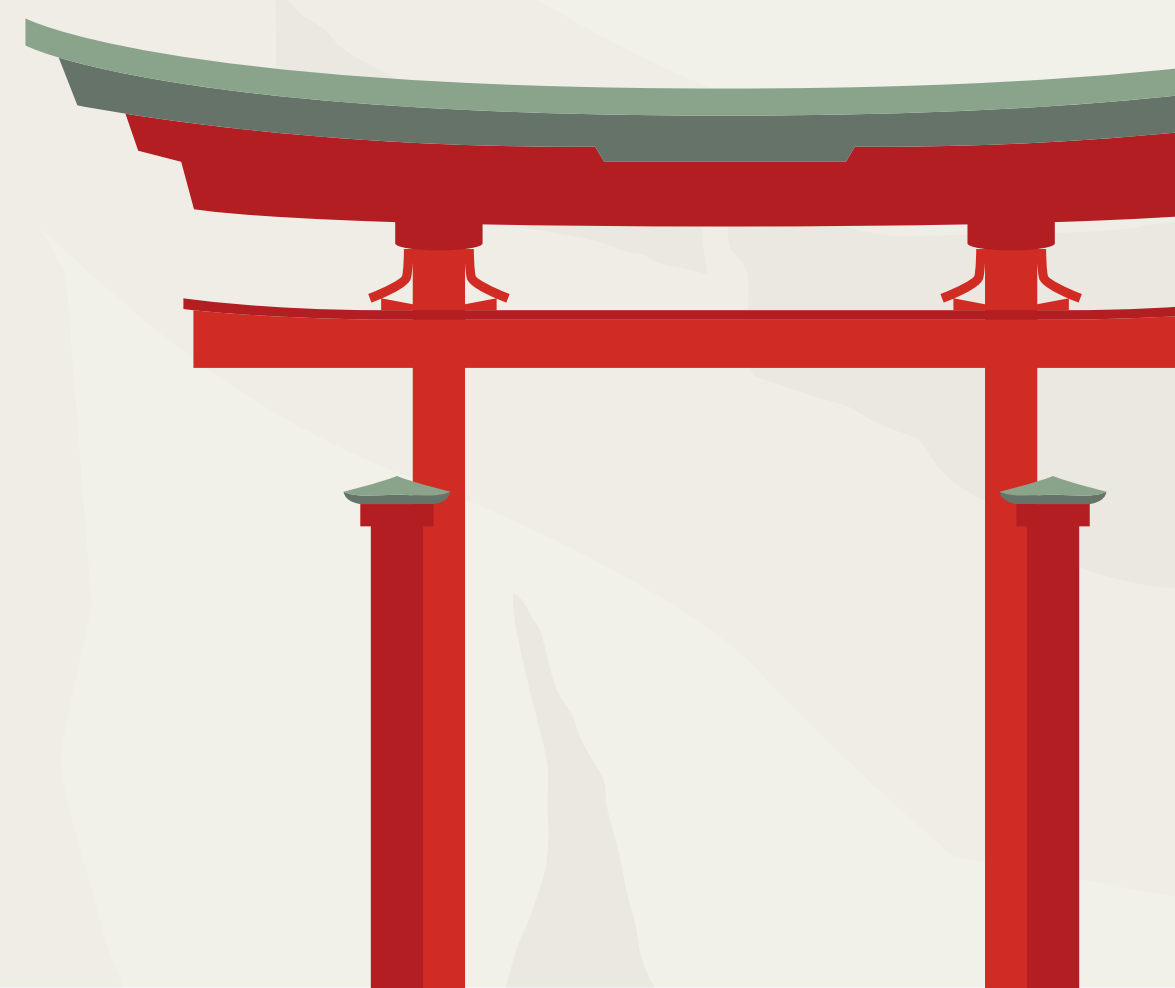
DAY 5

HIROSHIMA & MIYAJIMA ISLAND DAY TOUR

- Enjoy breakfast at Hiroshima Hotel.
- 09:00 AM: Meet your guide at the hotel lobby. Begin your full-day tour via metro, trams, and ferries (Tickets included).
- Visit the moving Hiroshima Peace Memorial Park
- Visit Peace Memorial Museum
- Cenotaph & Flame of Peace
- Children's Monument
- A-Bomb Dome, Hypocenter, Peace Bell
- Afternoon Excursion to Miyajima Island:
- Take a train + ferry ride to the island

VISIT :

- Itsukushima Shrine (famous floating torii gate)
- Daiganji Temple, Daisho-in Temple
- Five-Storied Pagoda, Senjokaku Pavilion
- Return by ferry and train
- Evening Drop-Off at Hiroshima Station
- Overnight in Hiroshima





DAY 6

HIROSHIMA TO OSAKA VIA SHINKANSEN

- Enjoy breakfast at Hiroshima Hotel.
- Reach Hiroshima station (by own) and Board the Shinkansen from Hiroshima to Shin-Osaka Station (~1.5 hours)
- Bullet train/Shinkansen ticket will provided by us
- Check-in at Osaka Hotel

IT WILL BE YOUR LEISURE DAY IN OSAKA, YOU CAN VISIT BELOW PLACES (BY OWN):

- Dotonbori – Dive into a world of street food & neon lights
- Shinsaibashi – Shopping paradise
- Visit teamLab Botanical Garden Osaka for a magical light experience
- Overnight in Osaka

NOTE: OUR HOTEL WILL BE AROUND 1 KM FROM METRO OR OSAKA STATION.





DAY 7

KYOTO & NARA DAY TOUR

- Enjoy breakfast at the hotel
- It will be guided tour, Depart from Osaka hotel at 8:00 AM

IN NARA VISIT:

- Nara Park – Meet the friendly, free-roaming deer
- Todai-ji Temple – Marvel at the Great Buddha statue (Entry: ¥800, cash only)

IN KYOTO VISIT:

- Fushimi Inari Taisha – Walk through the iconic red torii gates
- Lunch in Kyoto (at your own expense)
- Kiyomizu-dera Temple – Panoramic views of Kyoto (Entry: ¥500, cash only)
- Stroll through Gion, Kyoto's charming Geisha district
- Return to Osaka
- Overnight in Osaka





DAY 8

DEPARTURE FROM OSAKA TO AIRPORT

- Group Transfer to Osaka Airport (Morning departures only)
- Catch your flight back home with beautiful memories and unforgettable experiences!

BACK HOME WITH
MEMORIES OF THE
LAND FAR AWAY
BUT FOREVER
ETCHED IN US.





INCLUSIONS

1. ACCOMMODATION & TRANSFERS:

- 3 star Hotel stays in Tokyo, Hiroshima, and Osaka (7 nights total) – Please note that hotel rooms in Japan are typically compact in size.
- Group airport transfers (Tokyo Haneda Airport on arrival, Osaka Airport on departure)
- Guided tour (Mt. Fuji, Kyoto & Nara)
- Guided Tour for Hiroshima & Miyajima tour (via Local train, tram & ferry)

2. TRANSPORT:

- 3-Day Tokyo Metro Pass
- Shinkansen (Bullet Train) tickets:
- Tokyo → Hiroshima
- Hiroshima → Osaka
- Local train, tram & ferry tickets for Hiroshima & Miyajima tour

3. MEALS:

- Daily Breakfasts at the hotels (Total 7 Breakfast)

4. ENTRANCE TICKET:

- Tokyo Tower
- Teamlab

5. SUPPORT:

- English-speaking local guides on guided tours
- Assistance for exchanging bullet train vouchers



EXCLUSIONS

- International and domestic flights to/from Japan
- GST/TCS
- Anything not mentioned in inclusions
- Trip Captain from India
- Toda ji Temple Entrance ticket (800 Yen)
- Kiyomizu-dera Temple (500 Yen)



STANDARD PRICING

MODE	COST PER HEAD
DOUBLE SHARING (PER PAX)	139999/- 129,999/-

Book your seats by depositing an advance of **INR 20000/-** per head and rest has to be paid 15 days prior to the time of departure of the trip.



PAYMENT PROCEDURE

IMPS/NEFT TRANSFER

Banking details:

CAPTURE A TRIP INDIA PVT. LTD.

BANK: IDFC

A/C NO. : 10091665679

IFSC: IDFB0020148



captureatrip@okhdfcbank





CAT CARE

CAT CARE is an initiative by **Capture a Trip** to support those in need, funded by a portion of the profits earned from the trips you book with us.





CANCELLATION POLICY

NO REFUND SHALL BE MADE WITH RESPECT TO THE INITIAL BOOKING AMOUNT FOR ANY OF THE CANCELLATIONS. HOWEVER,

- If cancellations are made 30 days before the start date of the trip, 50% of the trip cost will be charged as cancellation fees.
- If cancellations are made 15-30 days before the start date of the trip, 75% of the trip cost will be charged as cancellation fees.
- If cancellations are made within 0-15 days before the start date of the trip, 100% of the trip cost will be charged as cancellation fees.
- In the case of unforeseen weather conditions or government restrictions, certain activities may be canceled and in such cases, the operator will try his best to provide an alternate feasible activity. However, no refund will be provided for the same.



TERMS & CONDITIONS

1. **Breakfast:** Includes light items like bread, pastries, fresh fruits, yogurt, juice, coffee, and tea.
2. **Prohibited Items:** Narcotics, weapons, fireworks, and toxic substances are strictly banned.
3. **Legal Responsibility:** Management is not responsible for any legal issues if a traveler is found guilty under Indian law.
4. **Behavior & Eviction:** Misbehavior or rule violations may lead to eviction without a refund.
5. **Safety & Security:** Travelers are responsible for their safety outside the camping premises.
6. **Damage & Loss:** Any damage to camping property must be fully compensated. Management is not liable for lost or stolen belongings.
7. **Guest Policy:** Only registered campers are allowed; outside guests must be pre-approved.
8. **Amenities:** Hot water availability is not guaranteed.
9. **Booking Confirmation:** Slots are confirmed only after full payment.
10. **Transport Issues:** No backup transport will be provided in case of breakdowns.
11. **Delays & Program Changes:** Delays due to traffic, weather, or unforeseen events may lead to cancellations or itinerary changes.
12. **Environmental Responsibility:** Travellers must help maintain cleanliness and safety.
13. **No Refund Policy:** Bookings are non-refundable and non-exchangeable.
14. **Final Note:** Enjoy the trip, respect others, and create great memories!



capture
a trip

CHECK US OUT

